

Rohrkupplungen für Schüttgüter

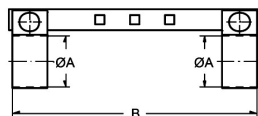
Art.Nr.

EUR

Art.Nr.

EUR

Sicherungsschelle für RKS 150



| DN | A | B | AISI304 / Alu | | Stahl verzinkt / Alu | |
|-----|-----|-----|---------------|-------|----------------------|-------|
| 150 | 150 | 350 | 571854 | 32,80 | 571754 | 19,10 |
| 152 | 152 | 350 | 571855 | 32,80 | 571755 | 19,10 |
| 155 | 155 | 350 | 571857 | 32,80 | 571757 | 19,10 |
| 159 | 159 | 350 | 571858 | 32,80 | 571758 | 19,10 |
| 168 | 168 | 350 | 571860 | 32,80 | 571760 | 19,10 |
| 174 | 174 | 350 | 571863 | 32,80 | 571763 | 19,10 |
| 180 | 180 | 350 | 571866 | 37,60 | 571766 | 21,60 |
| 191 | 191 | 350 | 571869 | 37,60 | 571769 | 21,60 |
| 193 | 193 | 350 | 571870 | 37,60 | 571770 | 21,60 |
| 200 | 200 | 350 | 571873 | 37,60 | 571773 | 21,60 |
| 203 | 203 | 350 | 571874 | 37,60 | 571774 | 21,60 |
| 210 | 210 | 350 | 571877 | 39,70 | 571777 | 23,00 |
| 219 | 219 | 350 | 571878 | 39,70 | 571778 | 23,00 |
| 230 | 230 | 350 | 571881 | 39,70 | 571781 | 23,00 |
| 250 | 250 | 350 | 571884 | 39,70 | 571784 | 23,00 |
| 260 | 260 | 350 | 571886 | 39,70 | 571786 | 23,00 |
| 266 | 266 | 350 | 571887 | 39,70 | 571787 | 23,00 |
| 273 | 273 | 350 | 571889 | 39,70 | 571789 | 23,00 |
| 280 | 280 | 350 | 571890 | 39,70 | 571790 | 23,00 |

Sicherungsschelle für RKS 200

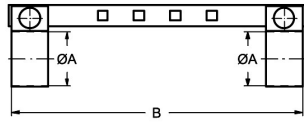


| DN | A | B | AISI304 / Alu | | Stahl verzinkt / Alu | |
|-----|-----|-----|---------------|-------|----------------------|-------|
| 83 | 83 | 400 | 572626 | 25,20 | 571926 | 16,30 |
| 85 | 85 | 400 | 572628 | 25,20 | 571928 | 16,30 |
| 89 | 89 | 400 | 572630 | 25,20 | 571930 | 16,30 |
| 95 | 95 | 400 | 572632 | 28,70 | 571932 | 19,10 |
| 100 | 100 | 400 | 572633 | 28,70 | 571933 | 19,10 |
| 102 | 102 | 400 | 572634 | 28,70 | 571934 | 19,10 |
| 105 | 105 | 400 | 572636 | 28,70 | 571936 | 19,10 |
| 108 | 108 | 400 | 572638 | 28,70 | 571938 | 19,10 |
| 110 | 110 | 400 | 572639 | 28,70 | 571939 | 19,10 |
| 115 | 115 | 400 | 572641 | 30,20 | 571941 | 20,30 |
| 120 | 120 | 400 | 572642 | 30,20 | 571942 | 20,30 |
| 125 | 125 | 400 | 572643 | 30,20 | 571943 | 20,30 |
| 127 | 127 | 400 | 572644 | 30,20 | 571944 | 20,30 |
| 129 | 129 | 400 | 572645 | 32,40 | 571945 | 20,30 |
| 133 | 133 | 400 | 572647 | 32,40 | 571947 | 20,30 |
| 135 | 135 | 400 | 572648 | 32,40 | 571948 | 20,30 |
| 140 | 140 | 400 | 572649 | 32,40 | 571949 | 20,30 |
| 146 | 146 | 400 | 572653 | 35,20 | 571953 | 24,20 |
| 150 | 150 | 400 | 572654 | 35,20 | 571954 | 24,20 |
| 152 | 152 | 400 | 572655 | 35,20 | 571955 | 24,20 |
| 155 | 155 | 400 | 572657 | 35,20 | 571957 | 24,20 |

Rohrkupplungen für Schüttgüter

Art.Nr. EUR Art.Nr. EUR

Sicherungsschelle für RKS 200



| DN | A | B | | | | AISI304 / Alu | | Stahl verzinkt / Alu | |
|-----|-----|-----|--|--|--|---------------|-------|----------------------|-------|
| 159 | 159 | 400 | | | | 572658 | 35,20 | 571958 | 24,20 |
| 168 | 168 | 400 | | | | 572660 | 35,20 | 571960 | 24,20 |
| 174 | 174 | 400 | | | | 572663 | 35,20 | 571963 | 24,20 |
| 180 | 180 | 400 | | | | 572666 | 39,90 | 571966 | 25,60 |
| 191 | 191 | 400 | | | | 572669 | 39,90 | 571969 | 25,60 |
| 193 | 193 | 400 | | | | 572670 | 39,90 | 571970 | 25,60 |
| 200 | 200 | 400 | | | | 572673 | 39,90 | 571973 | 25,60 |
| 203 | 203 | 400 | | | | 572674 | 39,90 | 571974 | 25,60 |
| 210 | 210 | 400 | | | | 572677 | 41,90 | 571977 | 26,80 |
| 219 | 219 | 400 | | | | 572678 | 41,90 | 571978 | 26,80 |
| 230 | 230 | 400 | | | | 572681 | 41,90 | 571981 | 26,80 |
| 250 | 250 | 400 | | | | 572684 | 41,90 | 571984 | 26,80 |
| 260 | 260 | 400 | | | | 572686 | 41,90 | 571986 | 26,80 |
| 266 | 266 | 400 | | | | 572687 | 41,90 | 571987 | 26,80 |
| 273 | 273 | 400 | | | | 572689 | 41,90 | 571989 | 26,80 |
| 280 | 280 | 400 | | | | 572690 | 41,90 | 571990 | 26,80 |

B
15